

BALSAM MTN. SOUTHEAST

210-48

SHOULDER with David Turan, 7/5/15

COMPASS BAROMETER

Site	p	Δp	Δe	e calc	e map	time	R1
(A) Rider Hollow	29.71	0.00	$R_1 = 0.925$		1990'	10:15	$\frac{3600' - 1990'}{29.71'' - 27.97''} = \frac{1610'}{1.74''} = 0.925$
(B) latford, e-p#	29.26	0.45	416	2406	#27 e-p	17:19	
(C) Haynes Col	28.58	1.13	1045	3035	3020' ±	NOON to 12:23	
(D) S CAMP OPTERA	28.48	1.23	1138	3128			
(E) Senecio Springs	28.12	1.59	1471	3461	±3500'	1:00	
(F) vegetation	—	(not recorded)				1:35	
(G) 27" OAK	—					—	
(H) tum back	28.46	1.25	1156	3146	e-p #673A	2:30	
(I) blaze	28.18	1.53	1415	3405		3:05	
(J) —	—						
(L) View to NE	—	(not recorded)				3:15	
(M) fir common, SORBUS	—						
(N) Balsam Mtn. summit	27.97	1.74	1610	3600' ✓	3600'	3:40	$R_2 = \frac{3600' - 1990'}{29.66'' - 27.97''} = \frac{1610'}{1.69''} = 0.953$
	27.97	1.69	1610	3600' ✓	3600'	3:41	
(O) Trail lookout	28.03 to 28.00	1.64	1563	3553	3560'	3:50 to 4:13	
(P) conglomerate ledge	—	(not recorded)					
(Q) Junction Belleayre	28.73	0.93	886	2876	2880'	4:58	
(A) Rider Hollow	29.66		$R_2 = 0.953$		1990'	5:41	

Only 4.4 miles to trailhead from 2810, not 5+.

Do any earlier MK notes show exact location of blaze atop Balsam Mtn? See also p.202-74 map.

0.953

ANSCO BAROMETER

210-49

Site	p	Δp	Δe	e calc	e map	time	R ₃
(A) See page 210-48 for descriptions	29.79 29.4	$R_3 = 1.032$		—	1990'	See page 210-48	$\frac{3600' - 1990'}{29.79'' - 28.23''} = \frac{1610'}{1.56''} = 1.032$
(B) 210-48	29.40	0.39	402	2392	ep #27		
(C) for	28.80	0.99	1022	3012	3020'		
(D) descri-	28.70	1.09	1125	3115			
(E) ptions	28.40	1.39	1434	3424	±3500'		
(F)	28.45	1.34	1383	3372			
(G)	28.46?	1.33	1373	3363			
(H) Turn back	28.65	1.14	1176	3166	ep #673A		
(I) blaze	28.44	1.35	1393	3383			
(L) View to NE	28.38	1.41	1455	3445			
(M) Balsam Summit	28.31	1.48	1527	3517		$R_4 = \frac{3600' - 1990'}{29.71'' - 28.23''} = \frac{1610'}{1.48''} = 1.088$	
(N) Balsam Summit	28.23	1.56	1610	3600√	3600'		
(O)	28.23	1.48	1610	3600√	3600'		
(P) Conglomerate ledge	28.29 to 28.26	1.43	1556	3546	3560'		
(Q)	28.48	1.23	1338	3328'			
(A)	28.87	0.84	914	2904	2880'		
	29.71	$R_4 = 1.088$		—	1990'		

Other expeditions:

See p. 202-82 for ascent from Lost Cove, 9/26/14

See p. 211-10 for ascent from McKenley Hollow, 7/19/11

Previous elevation calcs for (E) Senecus Springs:

p. 211-10, 7/19/11 = 3449' (Y)

p. 210-5, 10/11/90 = 3469' (U)

p. 210-35, 9/18/06 = 3448' (X)

yet 3500' sign is slightly below it.

$$\frac{1610'}{1.48''} = 1.088$$

GEOLOGY

Conglomerate Cobbles in Stream Beds:

- (X) 1st bridge above Rider Hollow Trailhead: 5 cobbles, gray
- (W) 2nd bridge, at former Mine Hollow Junc: only one
- (V) Lean-to area: dozens, both gray and red-gray
- (U) 1st tributary, before last larch plantation: 3 cobbles
- (T) 2nd tributary: none
- (S) 2nd tributary, upper ford: none

"Irene" landslips ^{8/28/11} - see (Y) and (Z) on map p. 240-51

Conglomerate boulders common between (E) and (H) in fill.

Conglomerate ledge on trail at (P), N shoulder 3328'

Annotinum ledge below is SS, not CONG.

WOOLLY ADELGID

Dave noted 2 groves on hemlock on the SE bank of the main tributary to Lost Cove. Hike of 9/18/06 (p. 210-35 ff) passed near it. Any notes?

VEGETATION

240-50

(B) ^{±2420} YB visible from ford up to NE with numerous large unusual burls, each producing many short shoots with reduced lvs.. Are these epicormics, as a result of witches' brooms? Dave took photos. See notes p. for a similar YB on new trail from Dale Rd. to Mink Hollow pass.

(C) 3020' Col canopy 60 to 70'. No stunting here.

(D) 3128' 1st \$ CAMPYLOPTERA

(E) 3461' Senecio springs

Rudbeckia } tops
 Chelone } browsed off
 Veronica americana in fl.
 Cx crim. Onoclea
 Glycyrrhiza herb.
 Solid rug. \$CAMPYL

East of Senecio Springs as terrace narrows tends: LAP-DGOLD-VIBRO-ADLANTUM-TRIALICRUM

(F) 3372' Oak seedlings. 1 browsed fir seedling. CB-SM-OX-AA-\$CAMPYL

(G) 3363' OAK 27" but heavily defoliated. 2nd FIR seedling.

(H) 3146, 3166' Turn back + climb to Summit. BC+PB-B-MD-SUB-DP-RG-CAMPYL, R LACUSPICE

(I) 3405' Orange metal posted sign on blaze heading SE-NW SUG. R.F. Cruschshank

(L) 3445' 5 fir saplings, browsed, at a NE view in YB-MO forest. NO SUG. Rose Mtn Summit line up exactly with Wetkill Notch. Only a few SUB above.

(M) 3517' SORBUS. More fir + mature sized, but not dominant. RM-BC-KB On east spur, becoming less steep. Seatt-fir

(N) 3600' Summit. 6" SORB. Rock cairns mark summit on herdpath from trail.

(O) 3560' Lookout. Rose Mtn. Summit now slightly east of Wetkill Notch. Both \$ INT + CAMOYL on Summit ridge

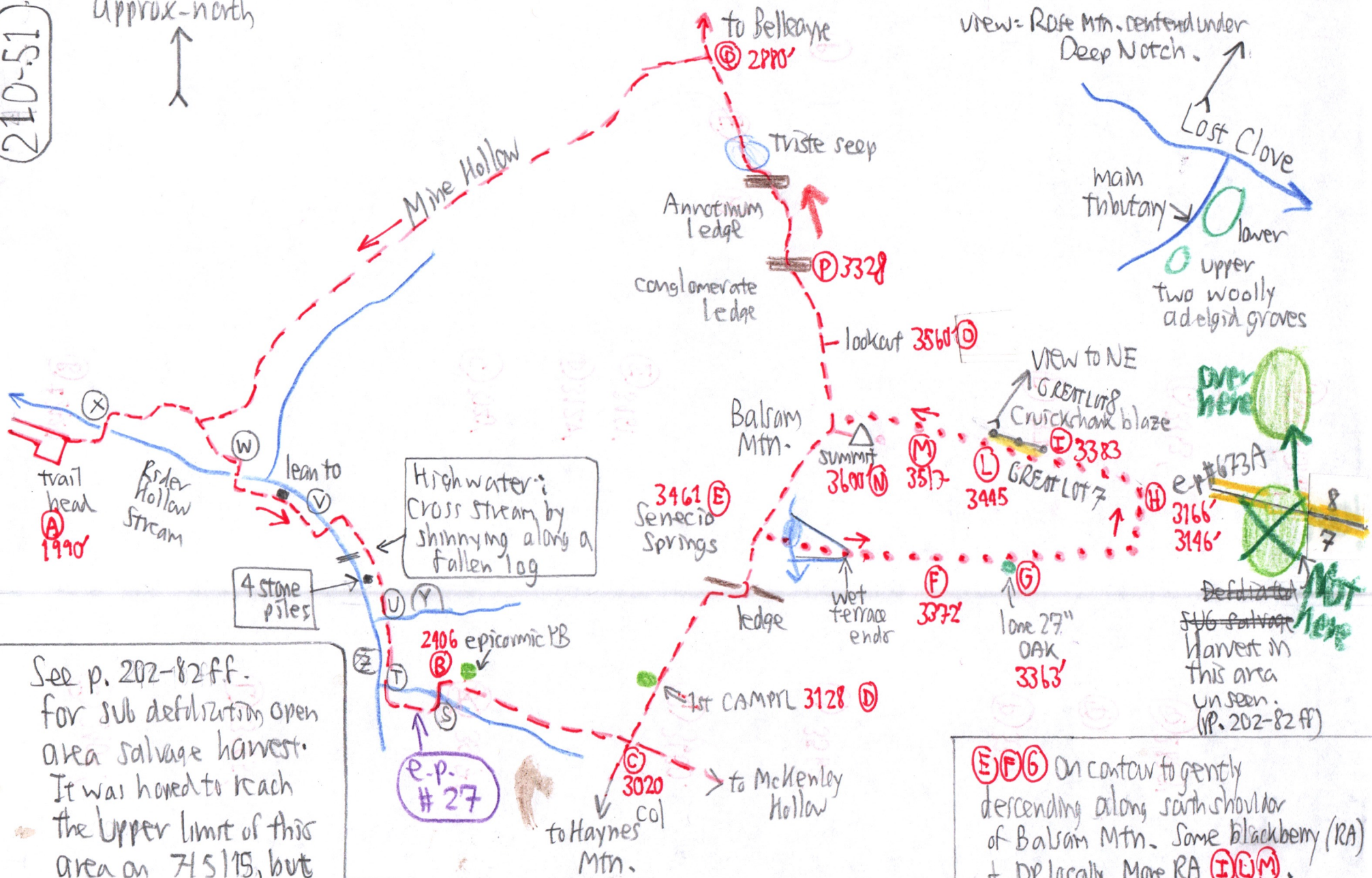
(P) 3328' Few scatt-fir in YB forest at cong. ledge Annotinum ledge below is SS, not CONG.

(Q) 2880' \$CAMPYL?

OAK lvs on ground in Mine Hollow, S=20, below NEM grove.

210-51

Approx-north ↑



Highwater: cross stream by shinnying along a fallen log

4 stone piles

See p. 202-82 ff. for sub defoliation, open area salvage harvest. It was hoped to reach the upper limit of this area on 7/5/15, but it was not even visible below through the dense forest.

SUBs & other hardwoods have grown up under Larch plantations, making Larch crowns difficult to see.

view - Rose Mtn. centered under Deep Notch.

Last Clove
main tributary
lower
upper
two woolly adelgid groves

VIEW to NE
GREAT LOT 8
Crickchank blaze



(E)(F)(G) On contour to gently descending along south shoulder of Balsam Mtn. Some blackberry (RA) & DP locally. More RA (I)(L)(M).
(H) Descend east down spur of mtn and then back up. Much steeper below (H) also shows on USGS.